



Supporting Students' Social-Emotional Learning

Paul Vieira, Ed.D.

Assistant Superintendent

Ashland Public Schools

pvieira@ashland.k12.ma.us

Sarah Gertner

Outreach Director

Panorama Education

sgertner@panoramaed.com



What we'll cover today

- Why has Ashland prioritized SEL?
- What does SEL look like in your district?
- How are districts measuring and promoting SEL? Guidance from CASEL
- Key lessons learned in SEL
- Questions & answers



Agenda



Proudly Supporting 40+ Districts and Schools in Massachusetts!





About Ashland Public Schools

- Serving 2,600 students across 5 school sites
- Our community wants our schools to focus on academic and whole child success
- As a district, our annual, strategic “improvement areas” include staff improvement and student well-being
- Early stages of embedding SEL across our district, still growing our social-emotional supports



WHAT IS SOCIAL-EMOTIONAL LEARNING?

SEL is the process through which children and adults acquire and effectively apply the knowledge, attitudes, and skills necessary to understand and manage emotions, set and achieve positive goals, feel and show empathy for others, establish and maintain positive relationships, and make responsible decisions.





Why is SEL critical?

- Like many communities, have seen increases in hospitalizations, anxiety, referrals for counseling
- Students must have their hearts and minds ready to learn in order to thrive
- Extensive research shows that as anxiety increases, executive functioning and IQ decrease
- Recognized a need for using data to inform our goals and improvement as a district



Why SEL?



CASEL District Framework

CASEL provides a comprehensive framework of 10 essential areas for systematically implementing SEL throughout a district. Districts that implemented these 10 components saw improvements in school climate, behavior, attendance, graduation rates, and academic achievement.

Why invest in social-emotional learning?

Students who are involved in SEL programs...

11%

academic gains



improved classroom behavior
& stress management

11:1

return on investment

Why is SEL Important?

Why do you value it?

Polleverywhere:
Text paulvieira633
To 22333



What does SEL look like in your district?

- SEL frameworks, standards, or philosophy
- Interventions and systems of interventions
- Positive behavior and restorative practices
- Programs or curricula
- Professional development and skill-building for adults
- Measurement and SEL data
- Dedicated office or person acting as SEL champion
- School-driven or district-wide?



CASEL District Framework

- | | |
|-----------------------------|----------------------------|
| 1. Communication | 6. Professional Learning |
| 2. Vision | 7. Integration |
| 3. Align Resources | 8. Programing |
| 4. Build Internal Expertise | 9. Standards |
| 5. Needs Assessment | 10. Continuous Improvement |

<https://drc.casel.org/district-framework/>



Communicate SEL as a Priority, Develop a Vision, Conduct a Needs Assessment



District Resource Center

We Measure Math and Reading ...Why not SEL?



From the Central Office to the Classroom: Scaling Social-Emotional Learning in Fresno Unified

How one of California's largest school districts promotes student success through SEL measurement and a culture of collaboration



Ashland's Needs Assessment: Engaged parents, staff, and students

- ***School Safety***
- ***Grit***
- ***Engagement***
- ***Sense of Belonging***
- ***School Climate***
- ***Teacher-Student Relationships***
- ***Growth Mindset***



3,350
Student Responses



260
Teacher & Staff Responses



853
Family Member Responses



Sense of Belonging data

QUESTION

➤ Overall, how much do you feel like you belong at your school?

59 %
responded favorably

QUESTION

➤ How much respect do students in your school show you?

54 %
responded favorably

QUESTION

➤ How well do people at your school understand you as a person?

45 %
responded favorably

QUESTION

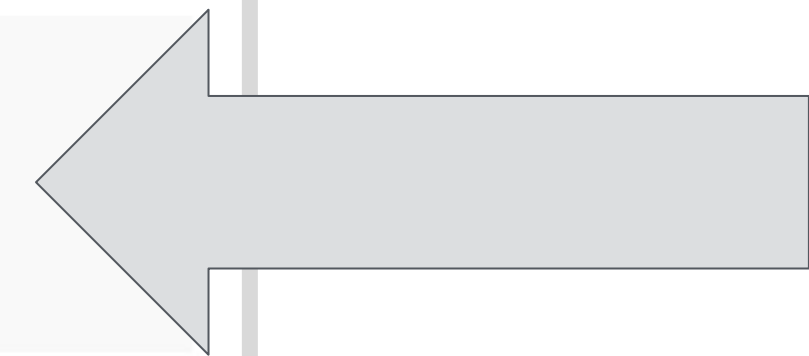
➤ How much do you matter to others at this school?

42 %
responded favorably

QUESTION

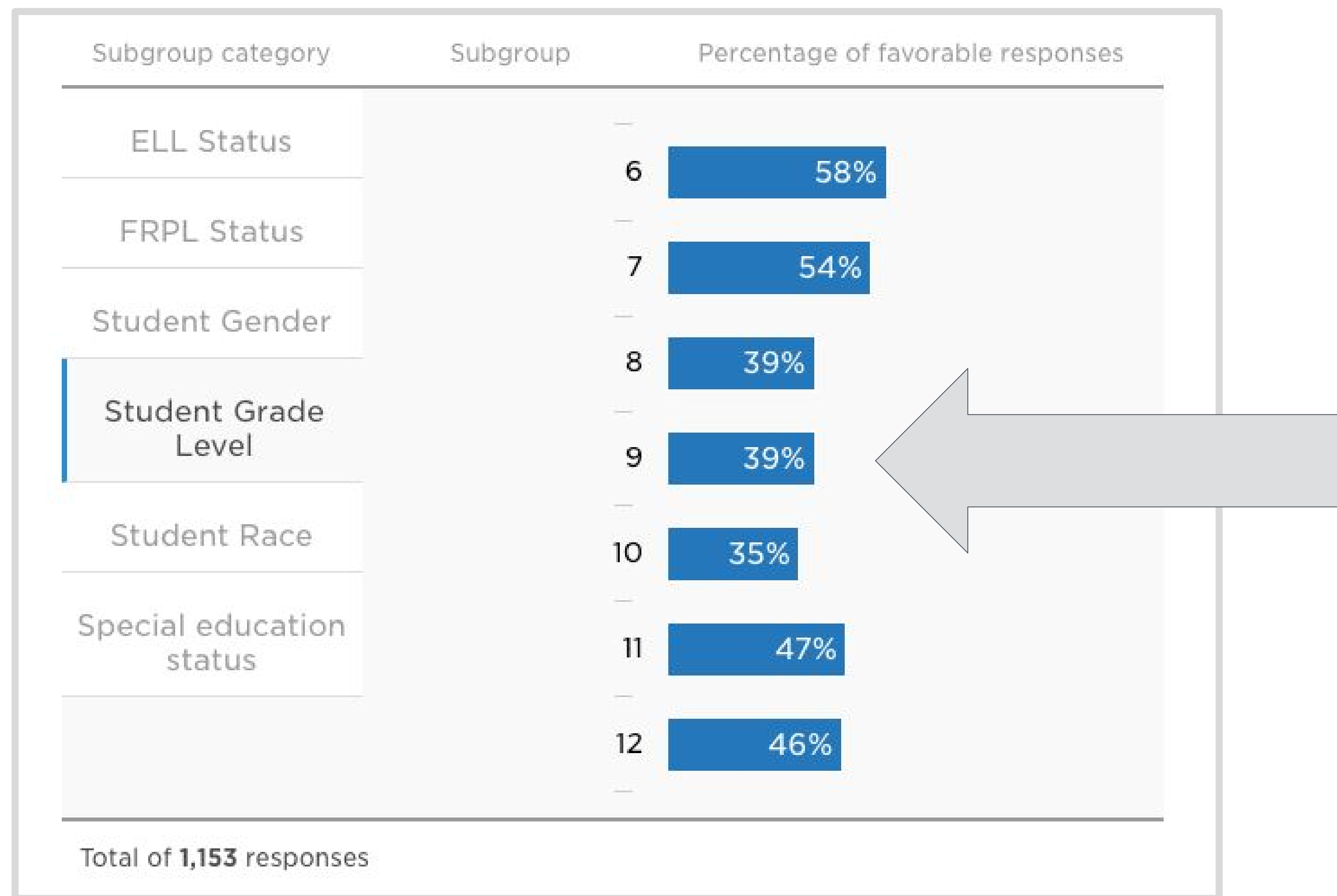
➤ How connected do you feel to the adults at your school?

29 %
responded favorably





Sense of Belonging by grade level





- Athletics
- Front office staff
- Out-of-school time

Professional Learning & Integration

- Student discipline
- Family events
- Bus drivers
- Cafeteria workers



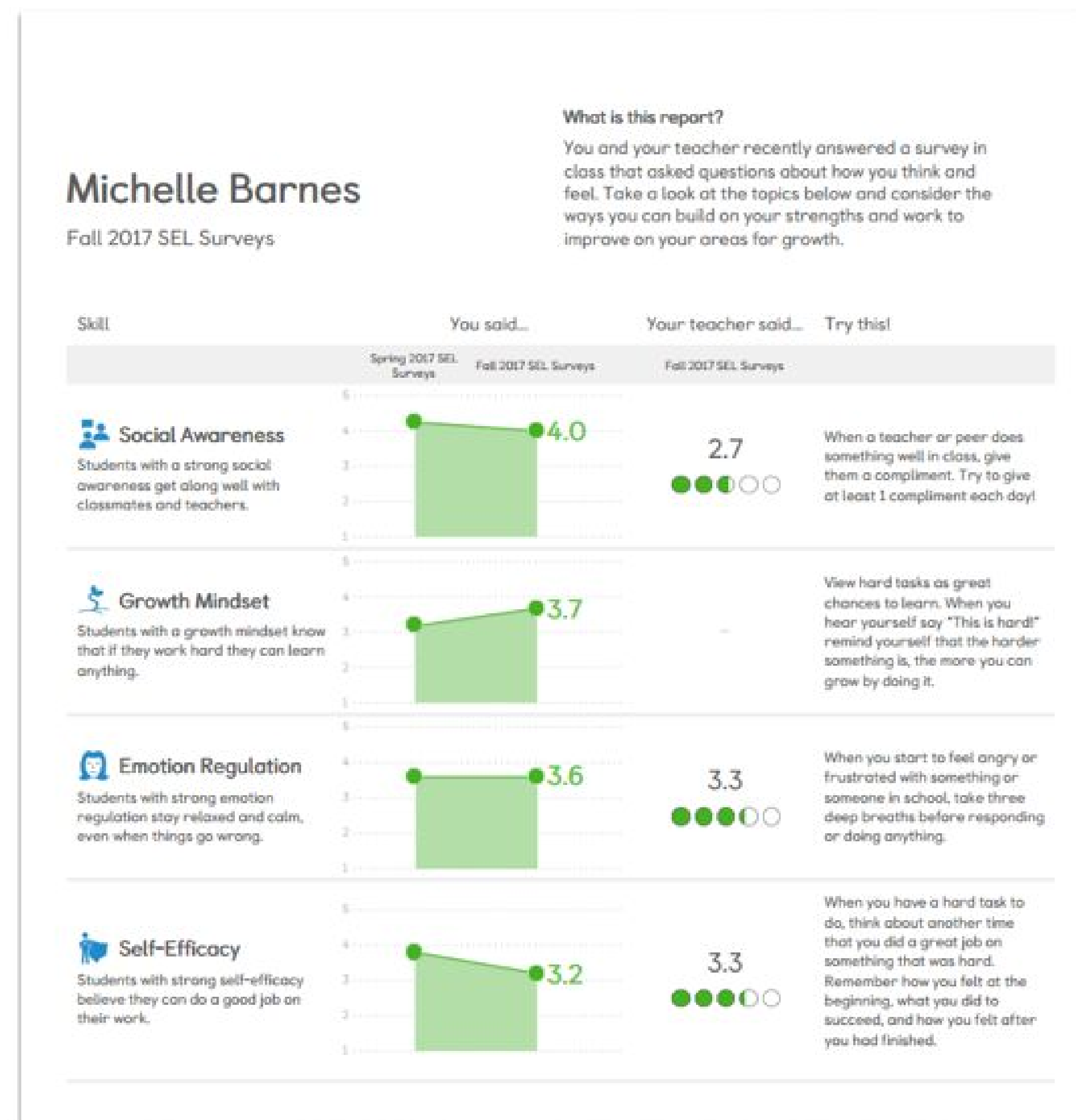
District Resource Center

Meet an SEL Superhero in CT



Having SEL Conversations in Advisory Period

At Council Bluffs middle and high schools, teachers will use SEL data in one-on-one and small group conversations with students to set non-academic growth goals with students.

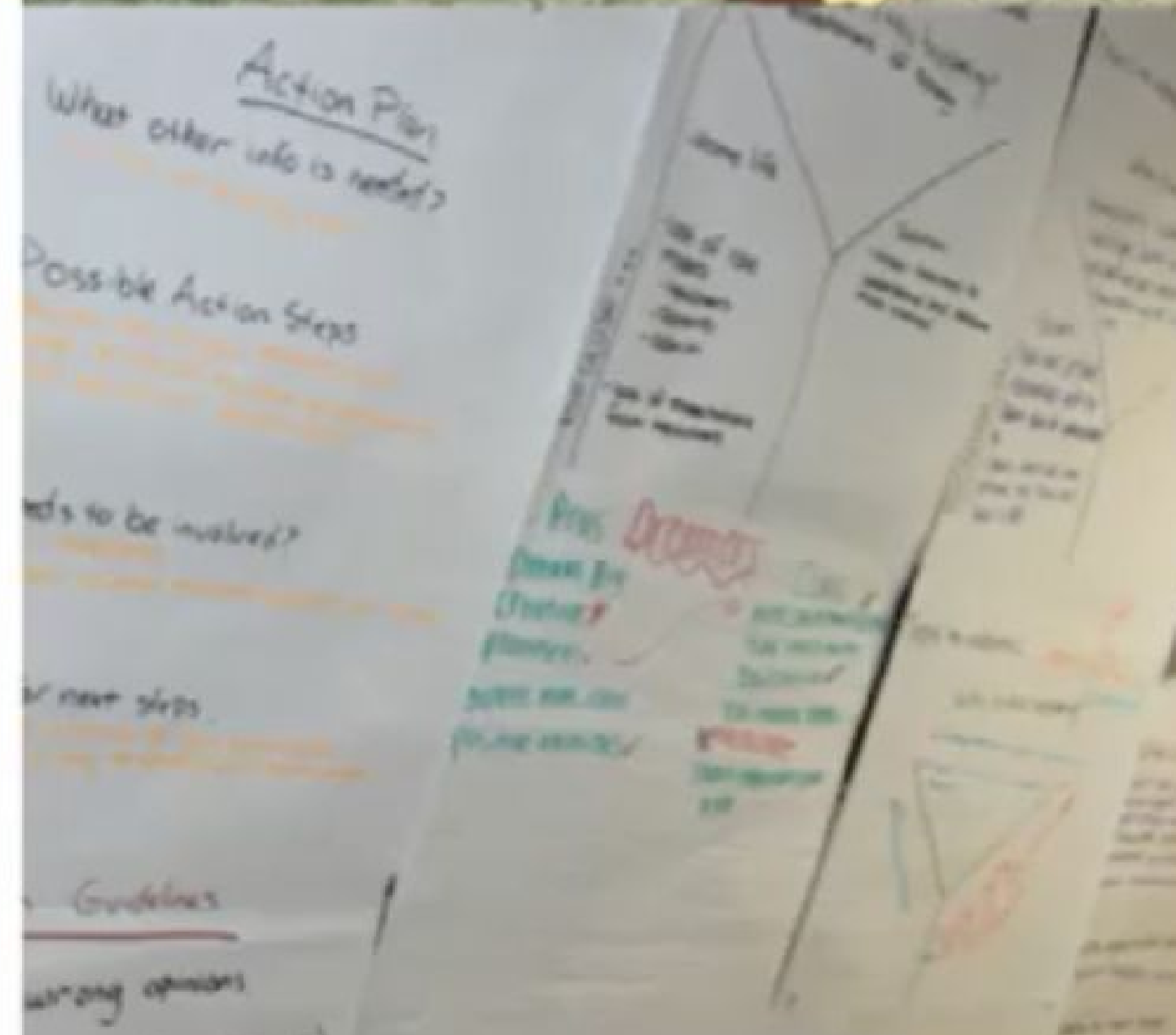




Washoe County School District
Every Child, By Name And Face, To Graduation

A focus on Student Voice

- The practice of educators intentionally, purposefully, and systematically *listening* and *eliciting* student viewpoints for improvement purposes
- Goal is to institutionalize student voice into the district's culture
- Started seeing opportunities to include students
- Student Advisory Board, leadership classes, and committees

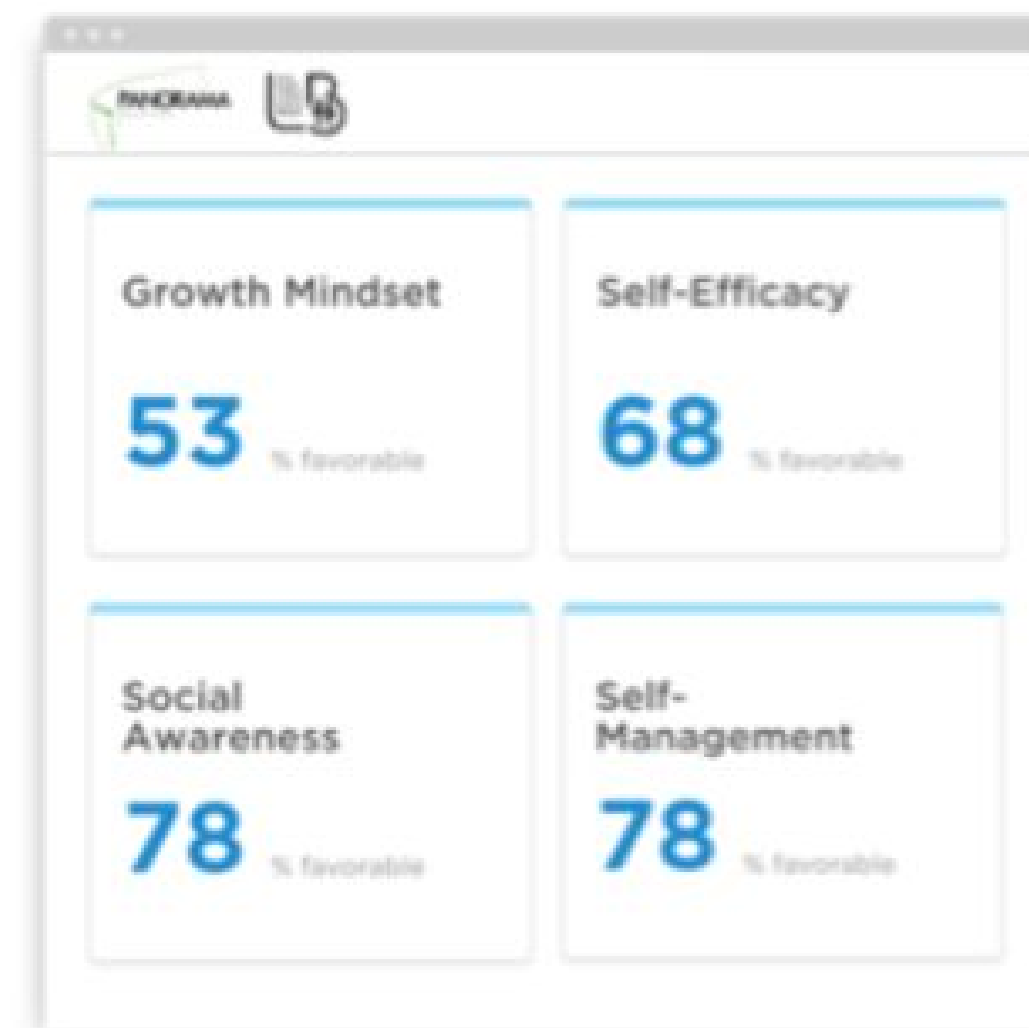


Student Data Summits

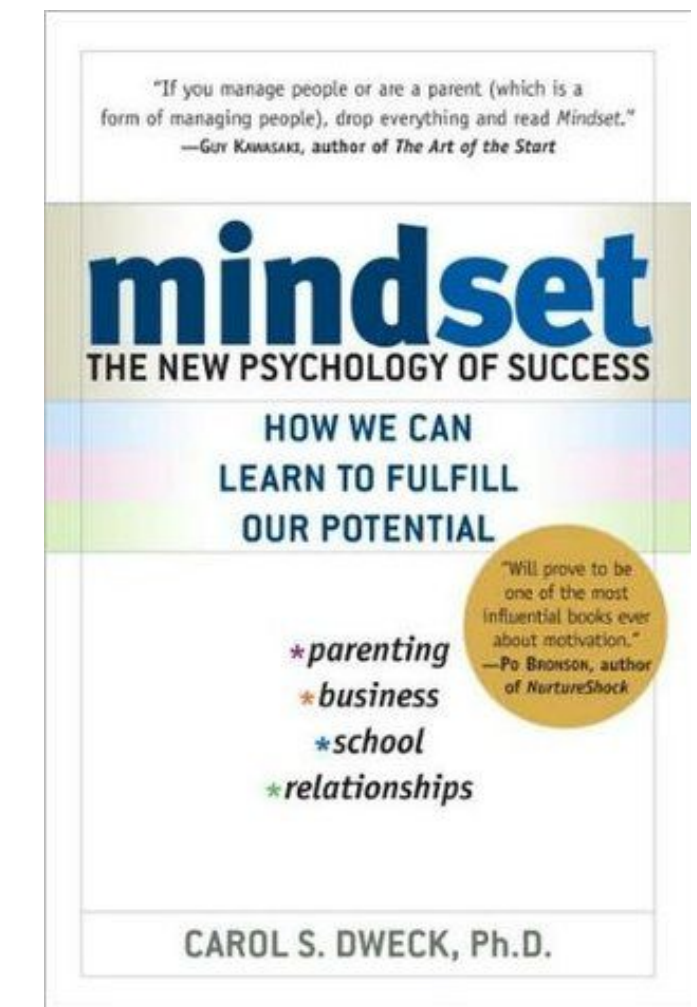
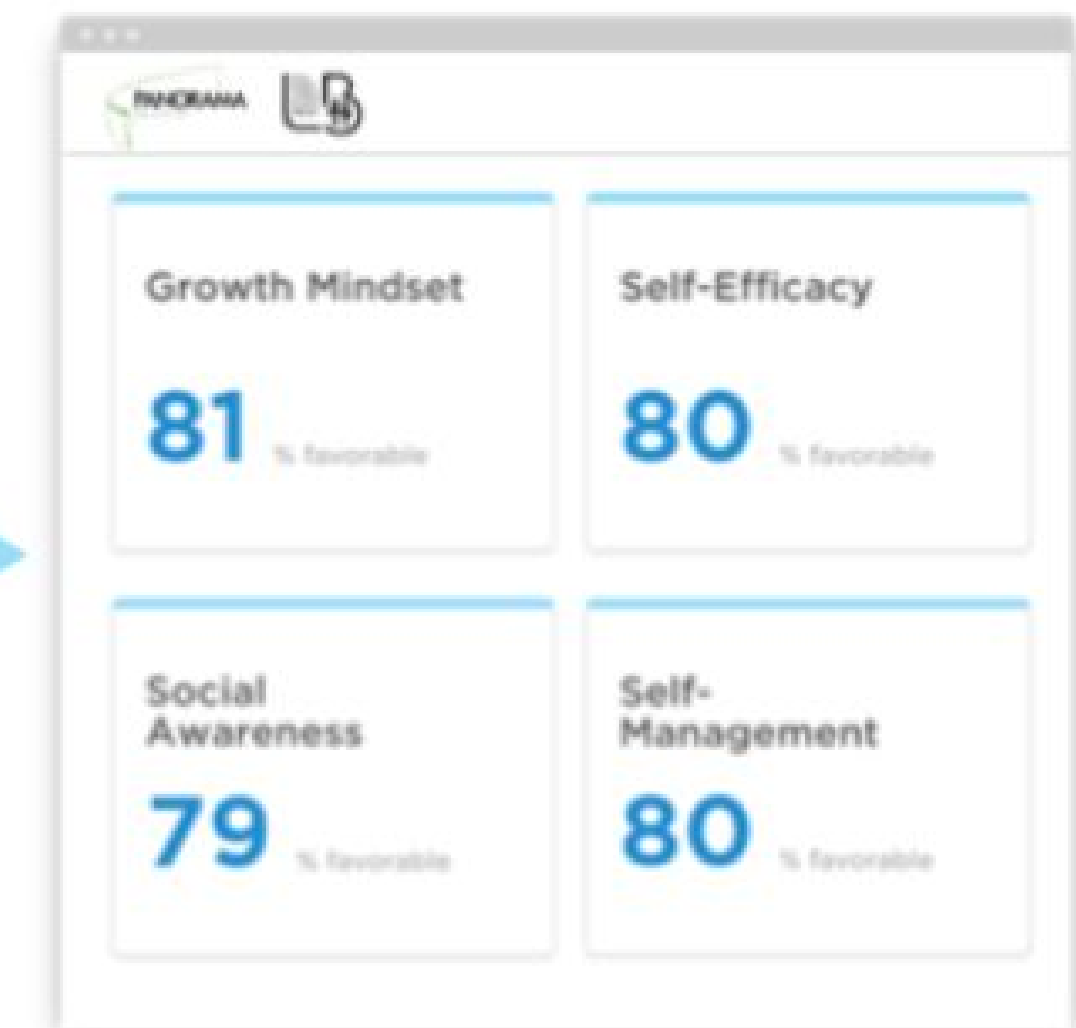
Common Language Across Students, Staff, and Families

MacArthur Elementary School identified **Growth Mindset** as a focus area and set a goal to increase the number of students who believe they can change and improve with effort.

School Year 2014-2015



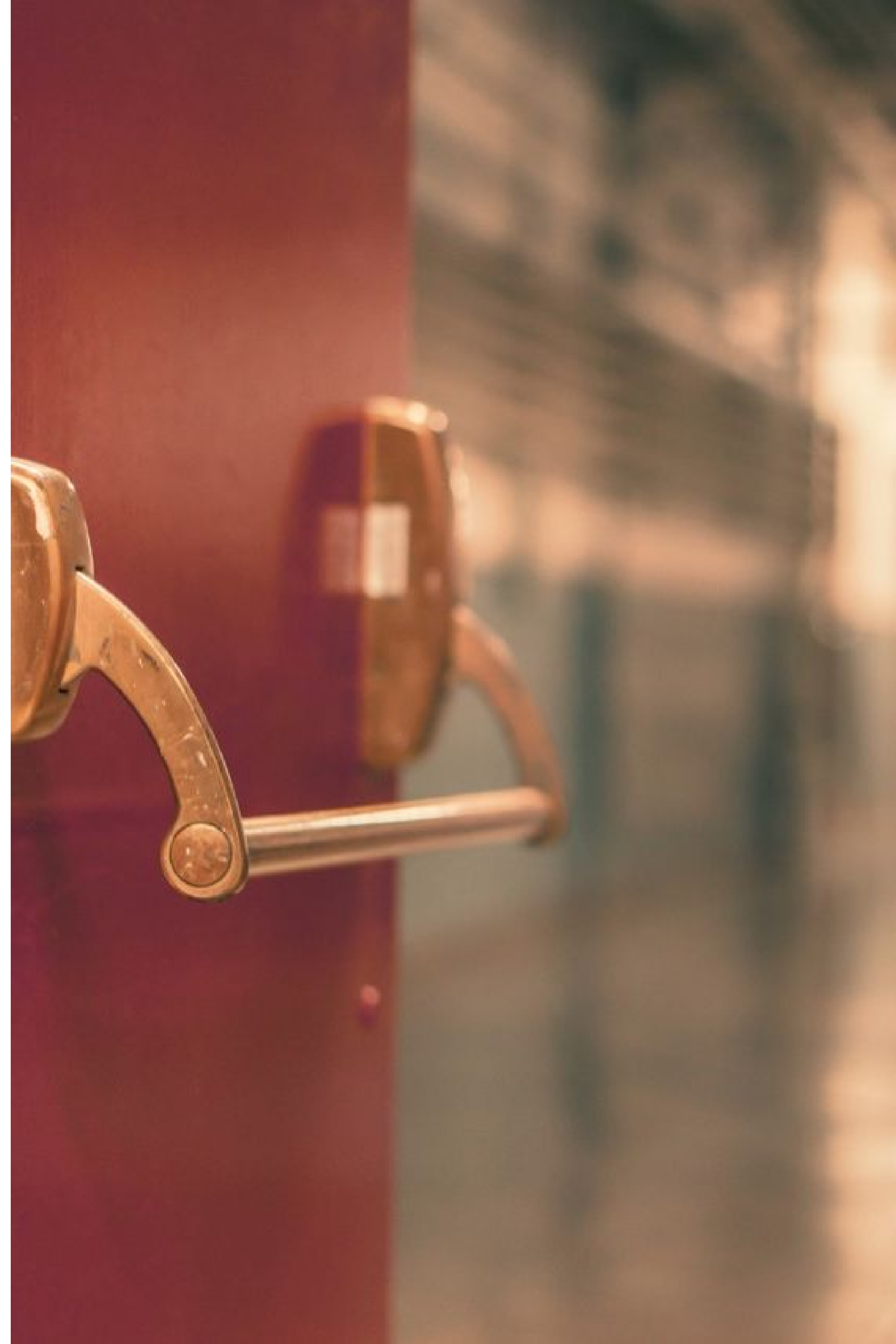
School Year 2015-2016





Key lessons learned

- Importance of listening to community, involving all stakeholders around SEL
- Start with a needs assessment—collect data and monitor progress
- Start small: our successful “Family Reconnect Weekend” started 3 years ago
- PBIS model

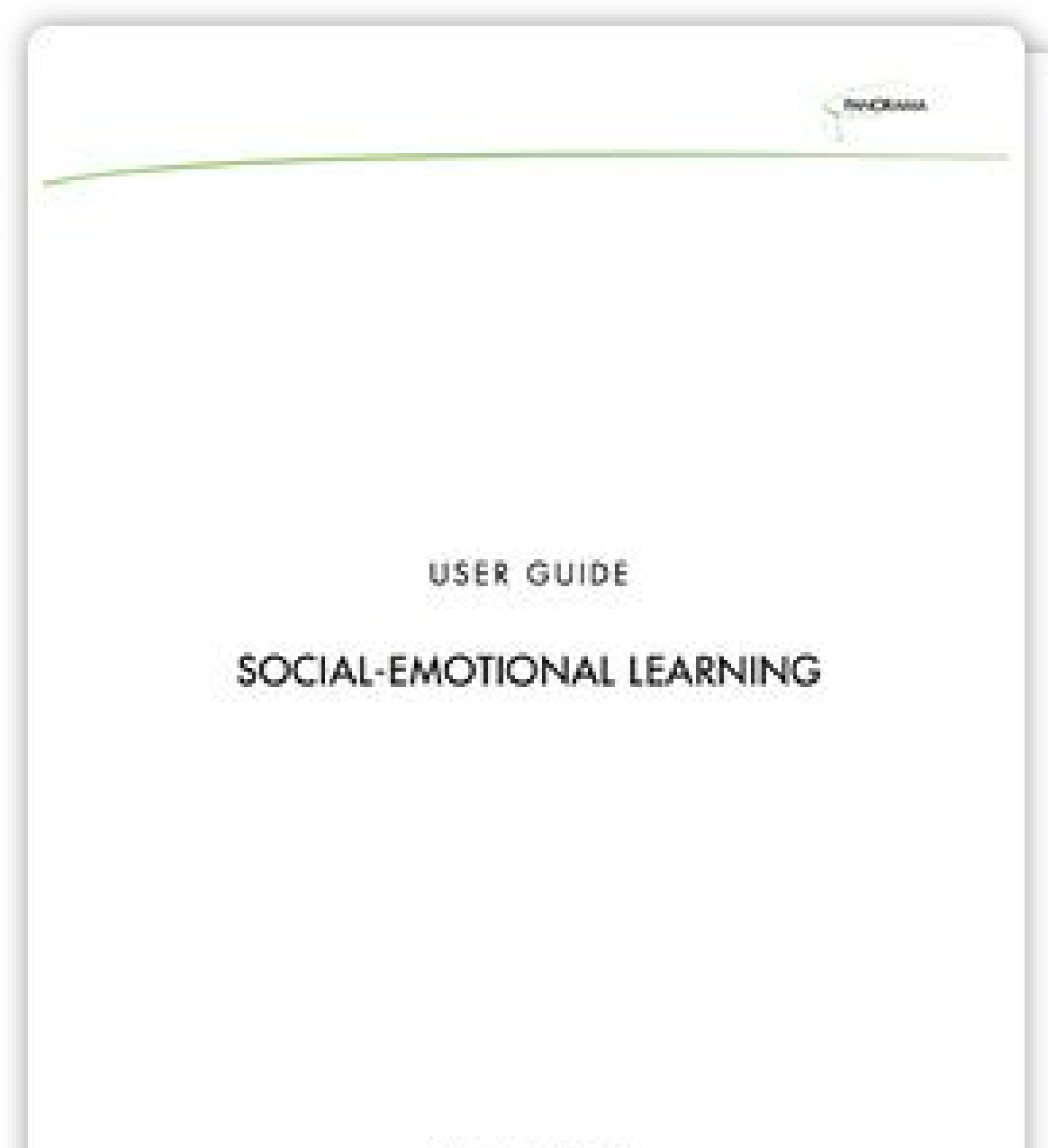




Grab a Copy of Panorama's SEL Measures!

Over 22 SEL topics available in our survey guide

www.panoramaed.com/social-emotional-learning



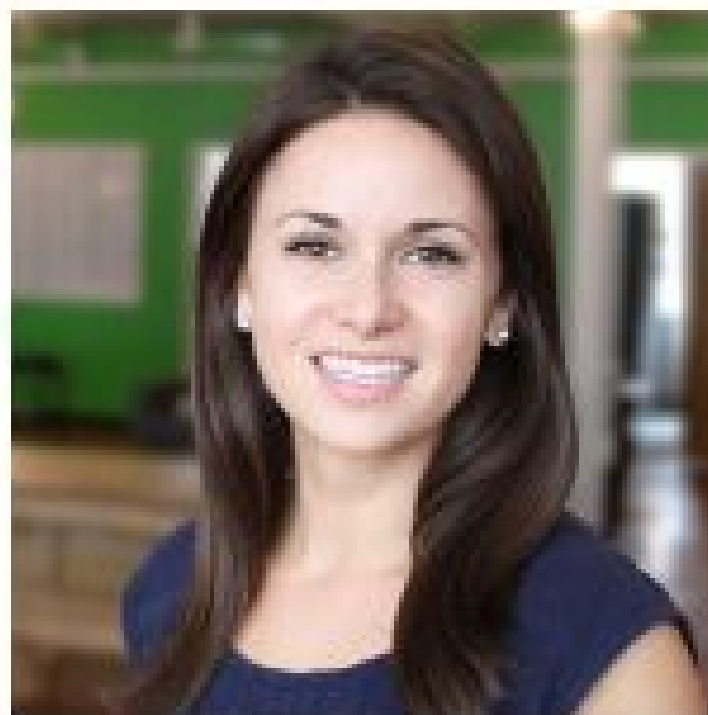


Questions & Answer



Visit us at booth #19

We'd love to discuss SEL strategies for your district



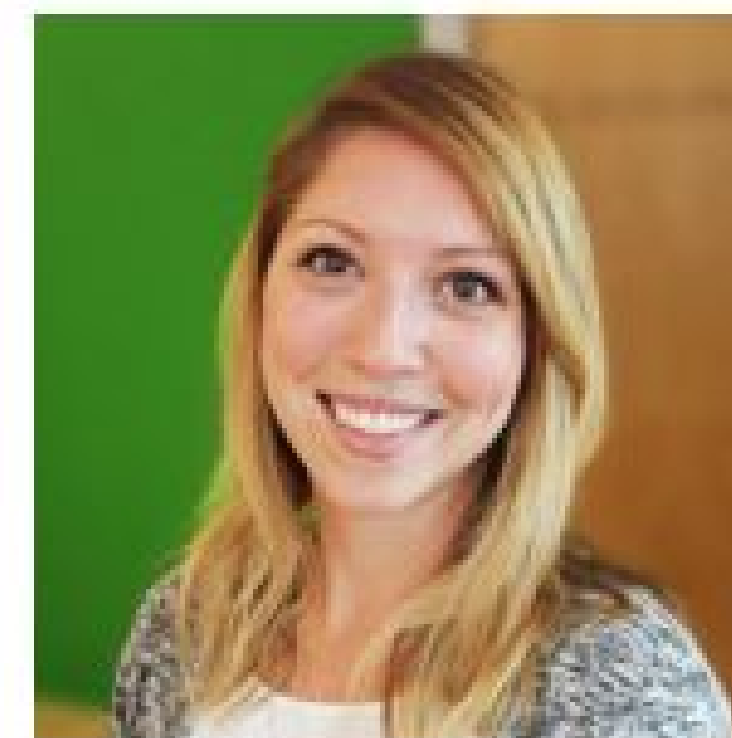
Sarah Gertner
Outreach



Dan Carter
Outreach



Tina-Marie Lohela
Outreach



Samantha Seker
Client Success